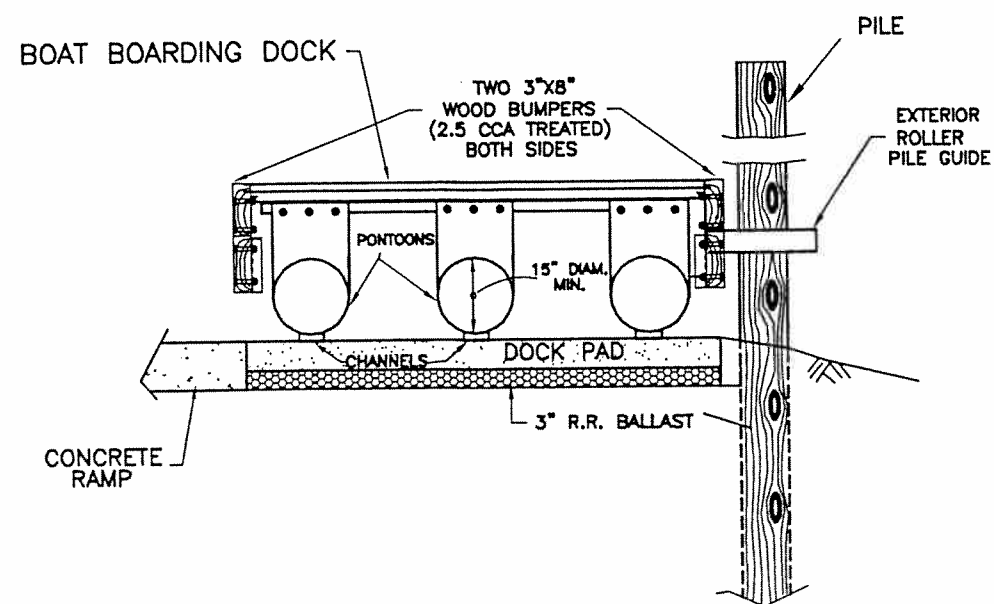


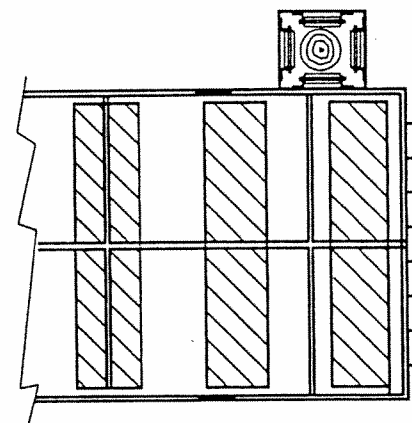
PLAN VIEW



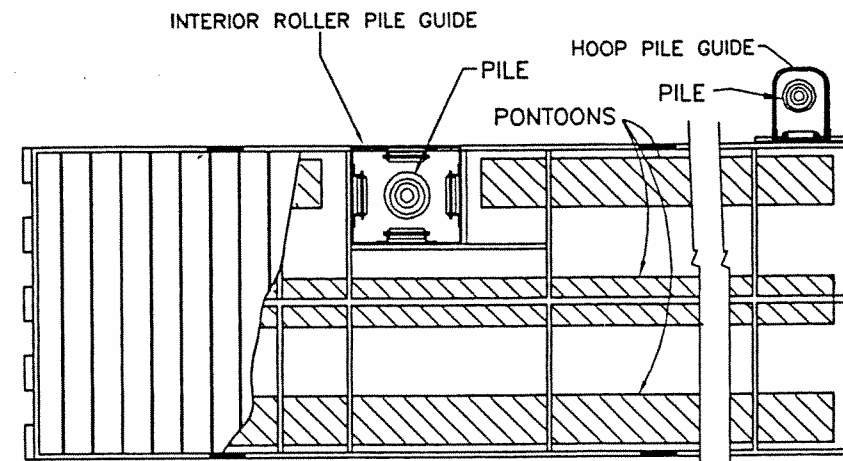
SECTION A-A

NOTES:

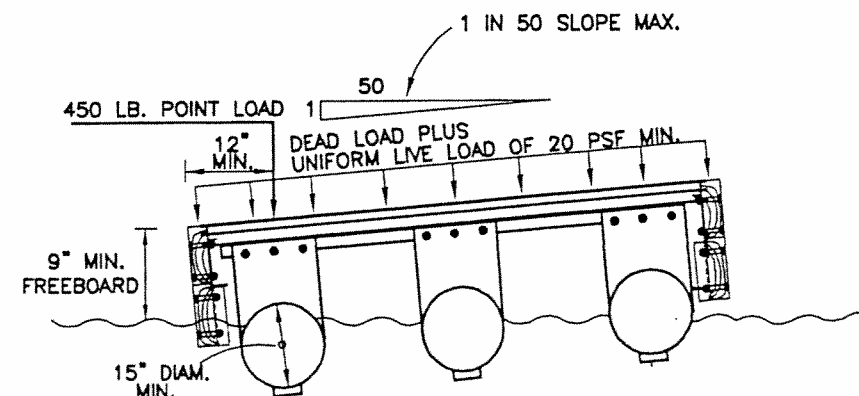
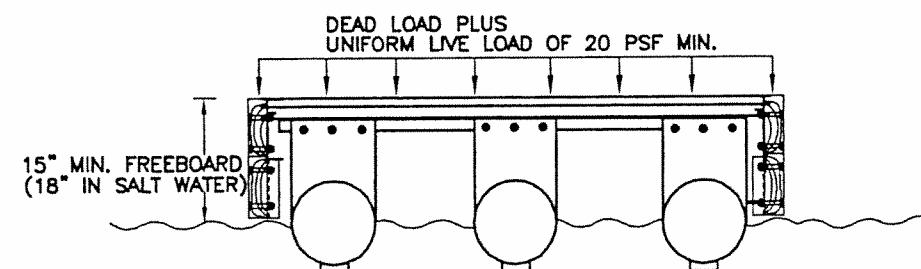
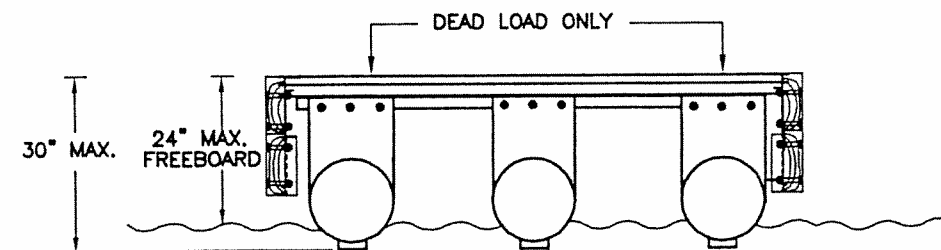
1. FREEBOARD IS TO BE 9" WITH UNIFORM LIVE LOAD OF 20 PSF PLUS POINT LOAD OF 450 POUNDS APPLIED AT ANY POINT 12" OR MORE FROM THE EDGE; 15" (18" IN SALT WATER) WITH UNIFORM LIVE LOAD OF 20 PSF.



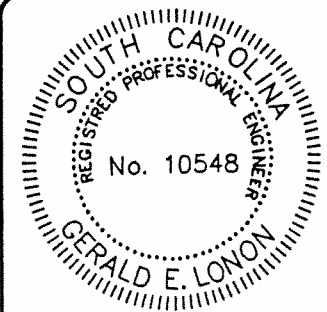
ALTERNATE:
TRANSVERSE PONTOONS



ALTERNATE PILE GUIDES



FREEBOARD REQUIREMENTS



PACE
ENGINEERING CONSULTANTS, INC.
1813 HAMPTON STREET, P.O. BOX 7561,
COLUMBIA, S.C. 29202



**BOAT BOARDING DOCK
SECTION**

SOUTH CAROLINA DEPARTMENT
OF NATURAL RESOURCES
ENGINEERING SECTION

SHEET
FD-2

OF
11